

QUEENSLAND CURRICULUM GENERAL PATHWAY



Philosophy - navigating the intersection of disciplinary knowledge, 21st century skills and future pathways.

General Pathway syllabuses support the needs and wants of a Gen Z alpha learner. They will master content in the classroom through **specialisation, student choice, adaptability and 21st skill development**. They will develop core skills for work and community connections. They have access to more information than any generation before, so they want to apply it. Technology is already highly personalised for them and so they want these opportunities in the classroom and their assessment which is provided and taught in the General Pathway.

A **General Pathway** is underpinned by developing **competencies in literacy, numeracy** and 21st Century skills, and is suited to students who are interested in pathways beyond secondary schooling that lead to tertiary studies and pathways for vocational training and work. Opportunities for the development of complementary skills have been embedded throughout subject matter. These skills, which overlap and interact with syllabus subject matter, are **derived from current education, industry and community expectations** and encompass the knowledge, skills, capabilities, behaviours and dispositions that will help students live and work successfully in the 21st century.

Emotional **wellbeing** is linked to academic performance, Learner-Preneur will continue to foster well-rounded individuals who will be successful in Year 13 and beyond. They encompass the **knowledge, skills, capabilities behaviours, and dispositions** that will help students live and work successfully.

Types of Learning

Disciplinary focused	Problem solving
Inquiry learning	Real-world context
Collaborative	Structured
Multi-modal assessment	Academic and Practical

Types of Learner

Critical and Creative	Deep thinker
Self-motivated	Inquirer
Organised	Good communicator
Goal orientated	Analytical

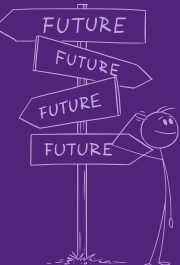
Senior Secondary Schooling Experiences

- ✓ Disciplinary knowledge driven
- ✓ Inquiry and experiential learning
- ✓ Problem-solving, creative thinking and investigation processes
- ✓ School based learning

Unique Characteristics

- ✓ Year 11 units 1 and 2 support Year 12 summative units 3 and 4
- ✓ Exploring real-world contexts
- ✓ A balanced integrated assessment program
- ✓ Option to do 1 VET or Applied subject

Possible next steps in year 13



 University or TAFE	 Earn & learn using qualification	 Employment	 Gap year	 Endless possibilities
------------------------	--------------------------------------	----------------	--------------	---------------------------

Outcomes

- ✓ ATAR
- ✓ QCE

General Subjects Offered

English	Maths	Sciences	Humanities	Technologies	The Arts	Physical Education
General English EALD	General Methods Specialist	Biology Chemistry Physics	Modern History Philosophy Geography Legal Studies	Engineering	Drama Music + Music Extension	Physical Education

Applied Subjects Offered

English	Maths	Technologies	The Arts	Physical Education
Essential English	Essential Maths	Industrial Technology Skills	Arts in Practice Media Arts in Practice	Sport and Recreation

VET Courses Offered at College

Technologies	Languages
Cert II Cookery/Cert III Hospitality (Traineeship) TAFE QLD/Tactile Learning (18-24 months)	Certificate II/III Applied Languages Ripponlea Institute (18-24 months)
Cert II Autonomous Technologies/Cert III Aviation (Remote Pilot) Aviation Australia (18-24 months)	
Cert I Construction/Cert II Furniture Making TAFE QLD (12-18 months)	

University Courses

University Courses for High School Students

University of Queensland - [Enhanced Studies Program](#)
 Griffith University - [Headstart Program](#)
 Queensland University of Technology - [Start QUT Program](#)

Sample Weekly Timetable

